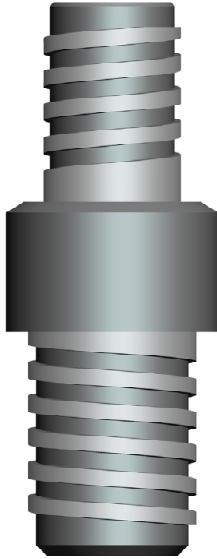
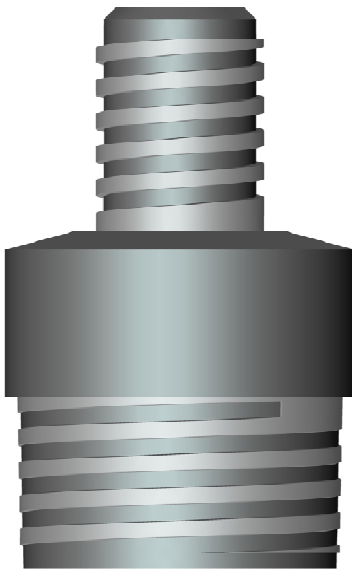




DRILL ROD ADAPTORS



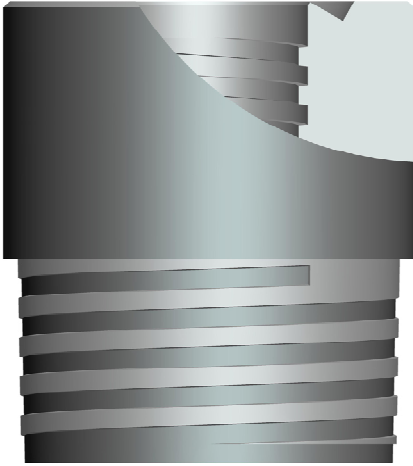
PIN	PIN	WEIGHT KGS	PART NUMBERS
AW	BW	1.4	94-00-050
AW	NW	1.9	94-00-051
BW	NW	2.2	94-00-052



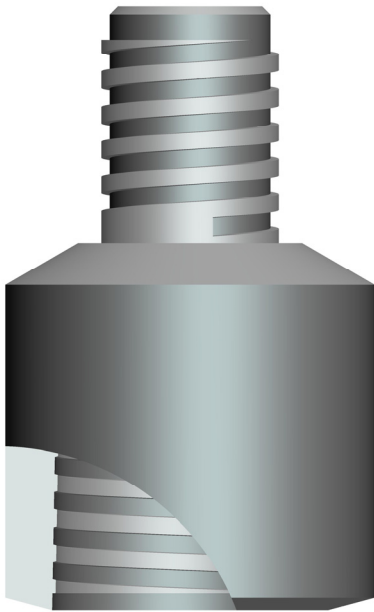
PIN	W/L PIN	WEIGHT KGS	PART NUMBERS
AW	BWL	1.4	94-00-053
AW	NWL	2.2	94-00-054
AW	HWL	3.2	94-00-055
BW	BWL	1.4	94-00-056
BW	NWL	2.3	94-00-057
BW	HWL	3.3	94-00-058
BW	PWL	3.5	94-00-059
BW	PHD	3.5	94-00-060
NW	NWL	2.6	94-00-061
NW	HWL	3.5	94-00-062
NW	PWL	4.4	94-00-063
NW	PHD	4.4	94-00-064



DRILL ROD ADAPTORS



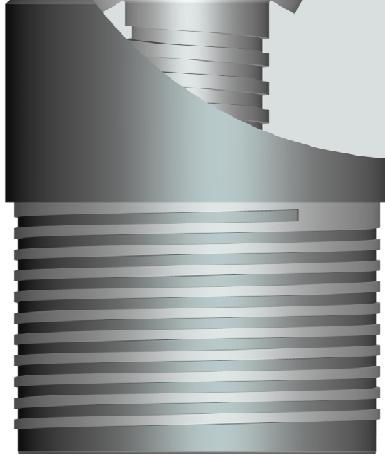
ROD BOX	W/L PIN	WEIGHT KGS	PART NUMBERS
AW	AWL	0.7	94-00-065
AW	BWL	1.3	94-00-066
AW	NWL	2.4	94-00-067
BW	BWL	1.0	94-00-068
BW	NWL	2.0	94-00-069
BW	HWL	3.8	94-00-070
NW	NWL	1.4	94-00-071
NW	HWL	3.5	94-00-072
NW	PWL	4.4	94-00-073
NW	PHD	4.4	94-00-074



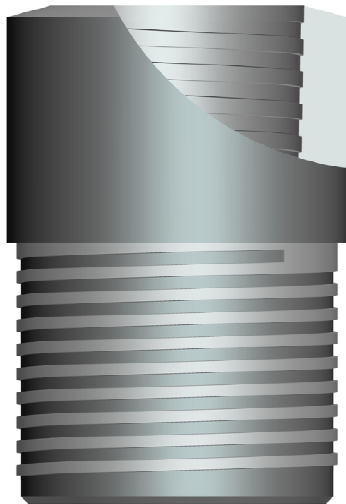
ROD PIN	W/L BOX	WEIGHT KGS	PART NUMBERS
AW	BWL	1.1	94-00-075
AW	NWL	1.7	94-00-076
AW	HWL	3.1	94-00-077
BW	BWL	1.1	94-00-078
BW	NWL	1.8	94-00-079
BW	HWL	2.9	94-00-080
BW	PWL	4.4	94-00-081
BW	PHD	4.4	94-00-082
NW	NWL	1.6	94-00-083
NW	HWL	2.7	94-00-084
NW	PWL	4.8	94-00-085
NW	PHD	4.8	94-00-086



CASING ADAPTORS



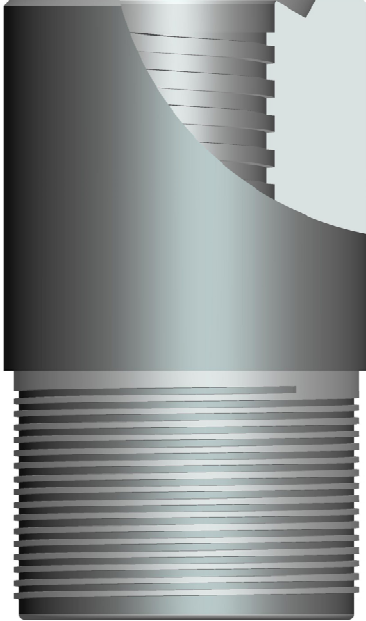
BOX	PIN	WEIGHT KGS	PART NUMBERS
AW	BW CASING	2.8	94-00-001
AW	NW CASING	5.0	94-00-002
AW	HW CASING	6.0	94-00-003
BW	BW CASING	2.5	94-00-004
BW	NW CASING	4.6	94-00-005
BW	HW CASING	8.3	94-00-006
BW	PW CASING	11.4	94-00-007
NW	NW CASING	4.2	94-00-008
NW	HW CASING	8.4	94-00-009
NW	PW CASING	11.9	94-00-010



BOX	PIN	WEIGHT KGS	PART NUMBERS
BWL	BW CASING	2.0	94-00-011
BWL	NW CASING	3.9	94-00-012
NWL	BW CASING	0.9	94-00-013
NWL	NW CASING	3.0	94-00-014
NWL	HW CASING	7.8	94-00-015
HWL	NW CASING	1.4	94-00-016
HWL	HW CASING	5.6	94-00-017
PWL	HW CASING	2.2	94-00-018
PHD	HW CASING	2.4	94-00-019
PHD	PW CASING	6.7	94-00-020

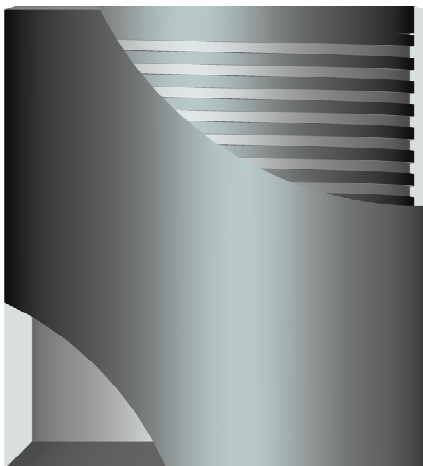


CASING ADAPTORS



BOX	PIN	WEIGHT KGS	PART NUMBERS
AW	BX CASING	3.0	94-00-021
AW	NX CASING	5.2	94-00-022
AW	HX CASING	6.2	94-00-023
BW	BX CASING	2.7	94-00-024
BW	NX CASING	4.8	94-00-025
BW	HX CASING	8.5	94-00-026
BW	PX CASING	11.6	94-00-027
NW	NX CASING	4.4	94-00-028
NW	HX CASING	8.6	94-00-029
NW	PX CASING	12.1	94-00-030

CASING DRIVE SHOE



BOX	WEIGHT KGS	PART NUMBERS
BW	0.8	94-00-031
BX	0.8	94-00-032
NW	1	94-00-033
NX	1	94-00-034
HW	1.2	94-00-035
HX	1.2	94-00-036
PW	1.4	94-00-037
PX	1.4	94-00-038



A.P.I. ADAPTORS



ROD BOX	API BOX	WEIGHT KGS	PART NUMBERS
BW	2 3/8" API REG	5.5	94-00-039
BW	2 7/8" API REG	6.9	94-00-040
BW	3 1/2" API REG	9.0	94-00-041
NW	2 3/8" API REG	5.9	94-00-042
NW	2 7/8" API REG	7.3	94-00-043
NW	3 1/2" API REG	9.5	94-00-044
NWL	2 3/8" API REG	3.3	94-00-045
NWL	2 7/8" API REG	3.0	94-00-046
HWL	2 3/8" API REG	3.0	94-00-047
HWL	2 7/8" API REG	2.7	94-00-048
HWL	3 1/2" API REG	4.5	94-00-049